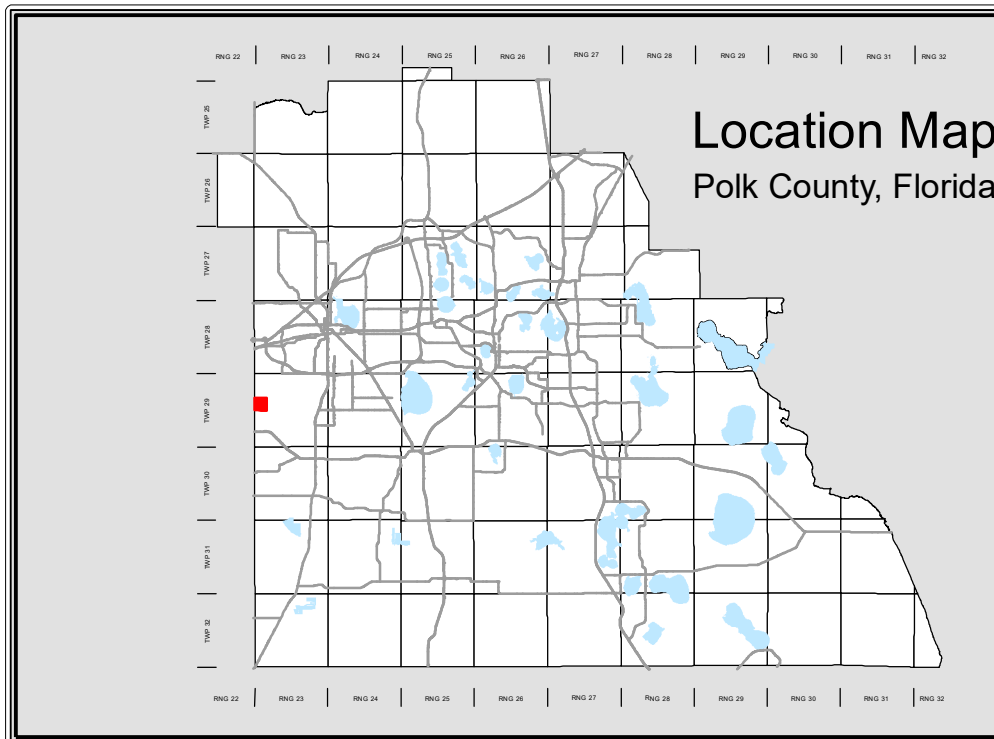
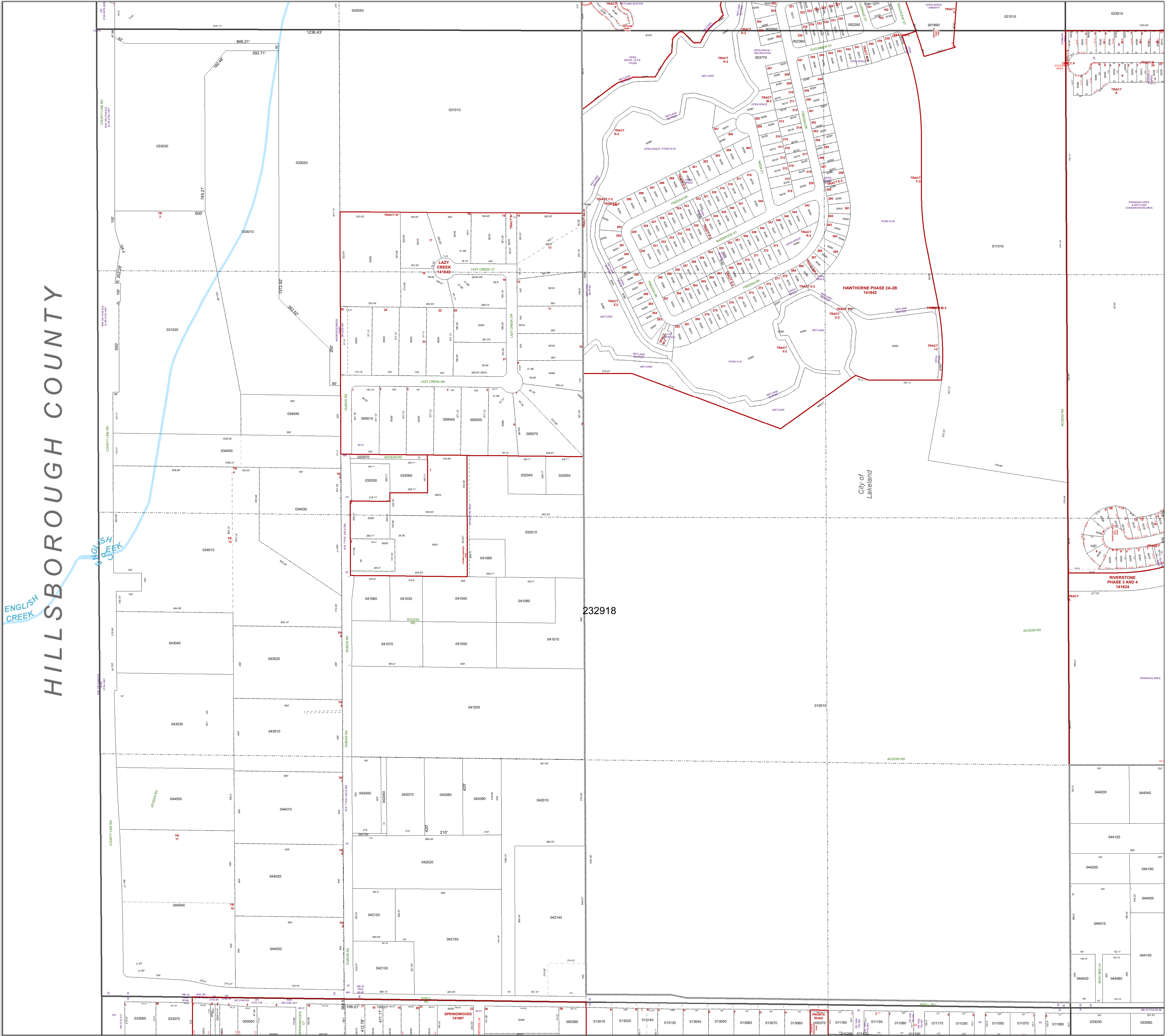


HILLSBOROUGH COUNTY



All of Section 18 Twp. 29 Rge. 23
Acres: 657 +/-

1 inch = 200 feet

Parcels	Sections	Easements
Lots	Quarter Section Lines	RR Lines
Subdivisions	Meander Lines	Water Lines
Municipal Boundaries	Gov't Lots	Water Bodies

Date Printed: 10/5/2024

Prepared by the Office of
Marsha M. Faux, CFA, ASA
Property Appraiser
Polk County, Florida
255 North Wilson Avenue - Bartow, Florida - 33830-3951
(863) 534-4777