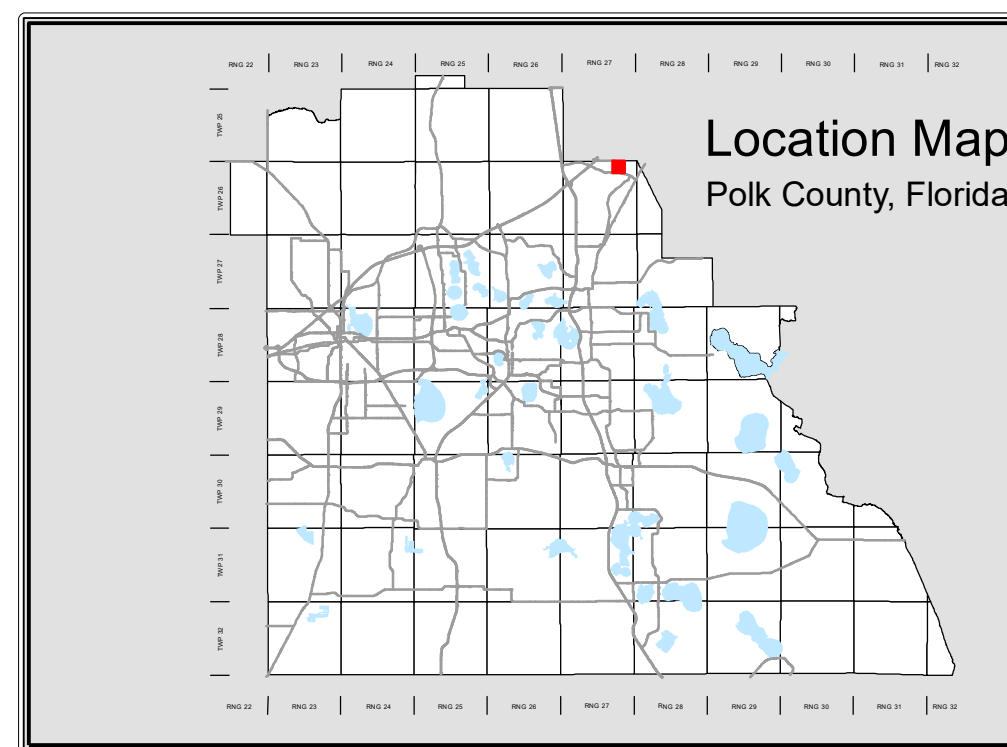
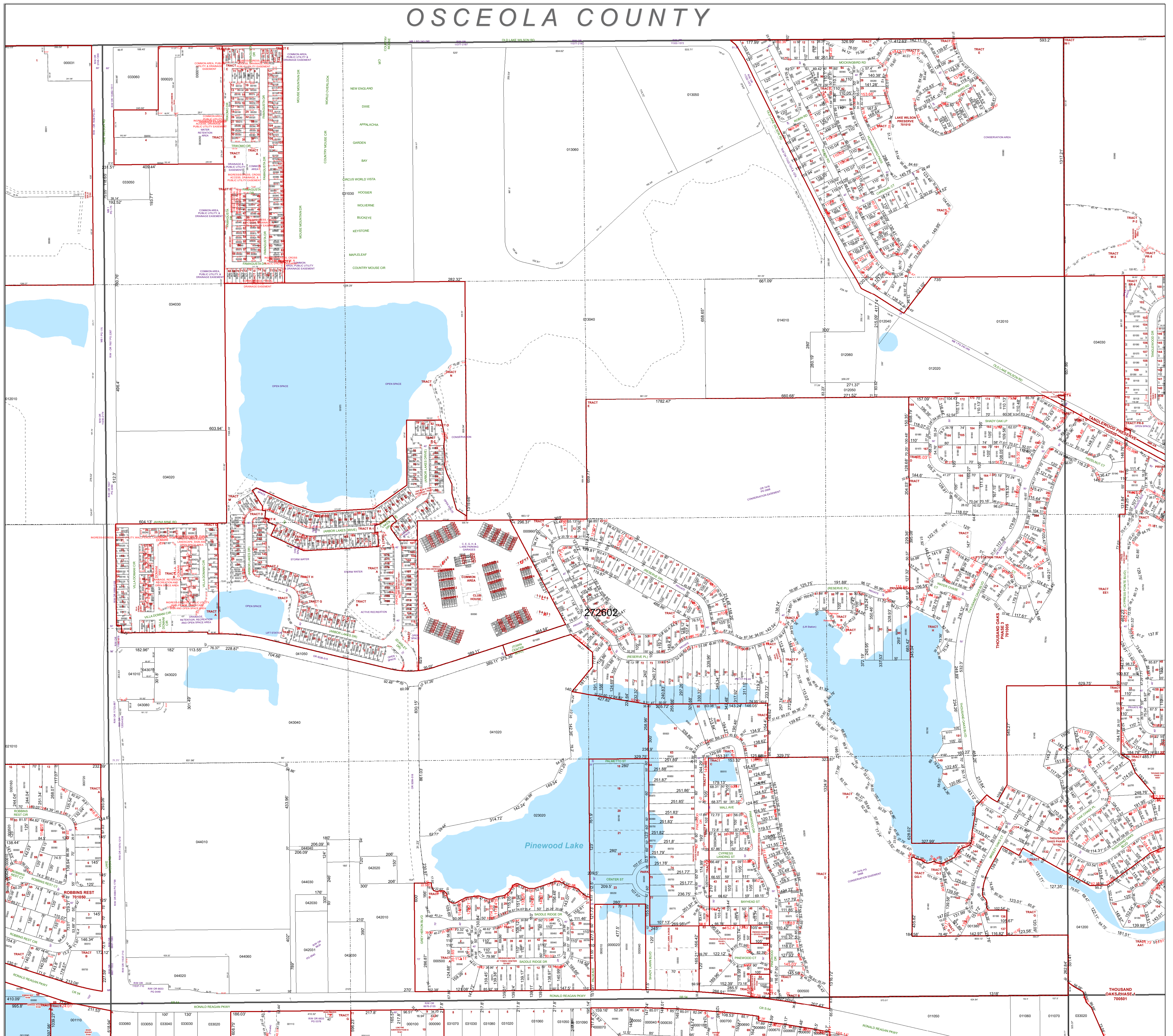


# OSCEOLA COUNTY

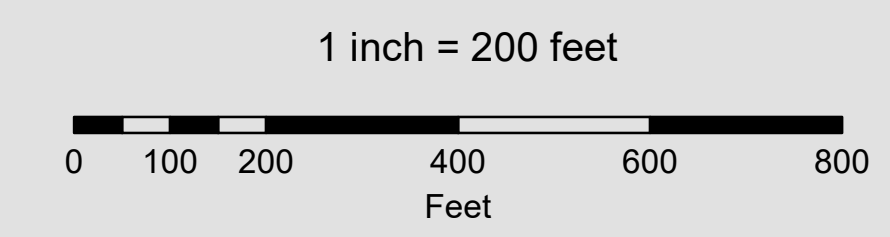
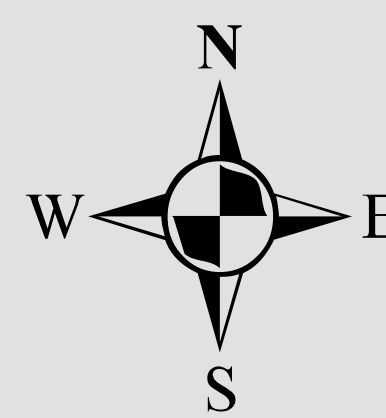


## All of Section 02 Twp. 26 Rge. 27

Acres: 642 +/-

### Legend

- |                      |                       |              |
|----------------------|-----------------------|--------------|
| Parcels              | Sections              | Easements    |
| Lots                 | Quarter Section Lines | RR Lines     |
| Subdivisions         | Meander Lines         | Water Lines  |
| Municipal Boundaries | Gov't Lots            | Water Bodies |



Note: This map is a worksheet used for illustrative purposes only. This is not a survey.

Date Printed: 8/24/2024



Prepared by the Office of  
**Marsha M. Faux, CFA, ASA**  
 Property Appraiser  
 Polk County, Florida  
 255 North Wilson Avenue - Bartow, Florida - 33830-3951  
 (863) 534-4777