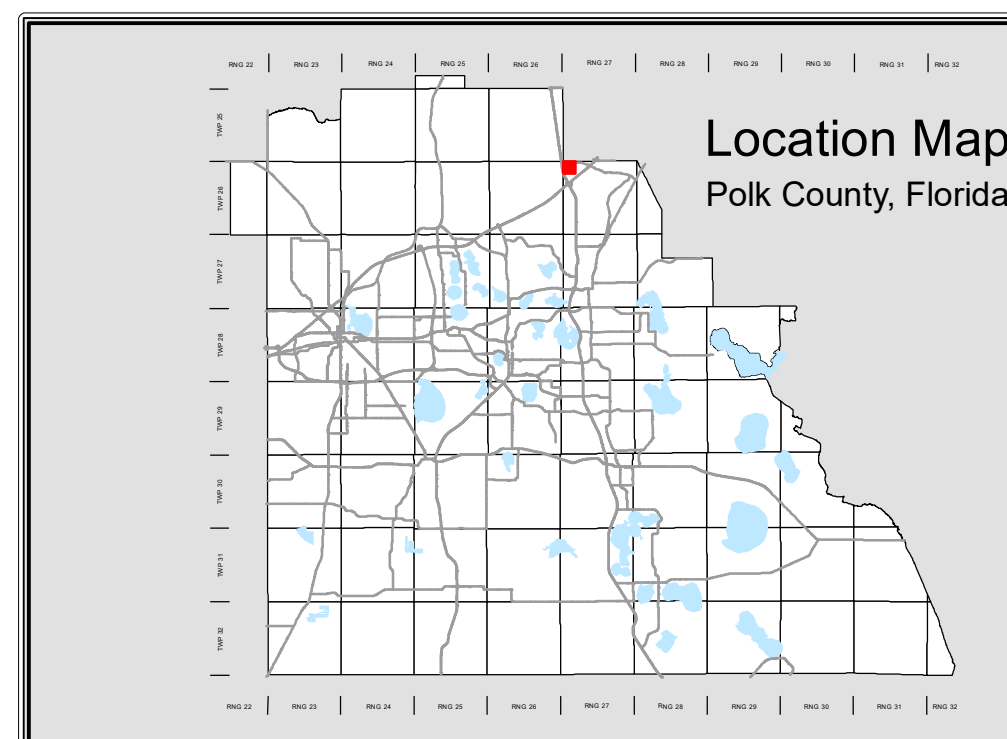
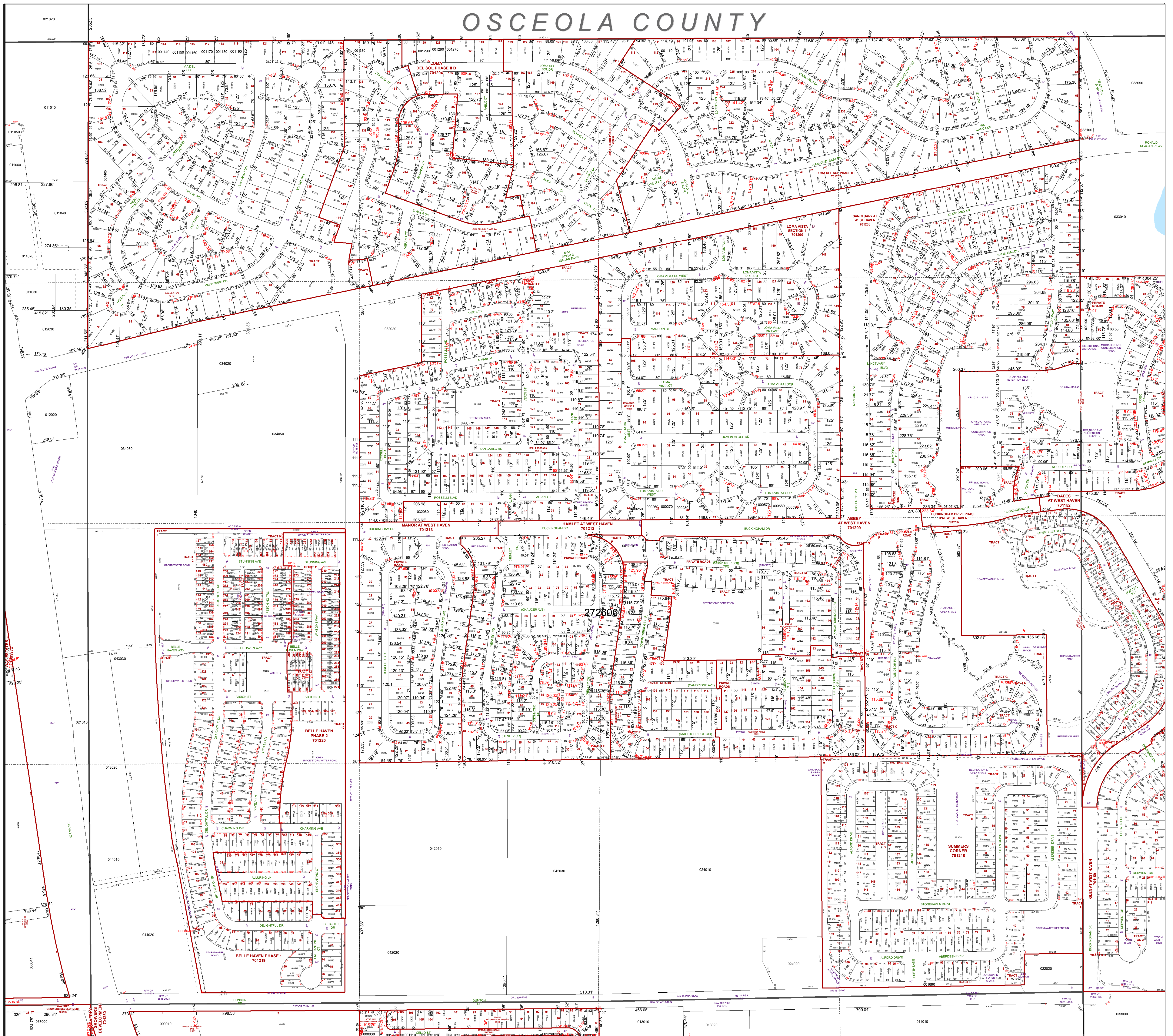


OSCEOLA COUNTY

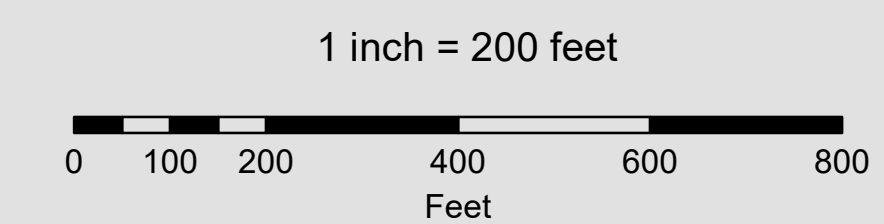
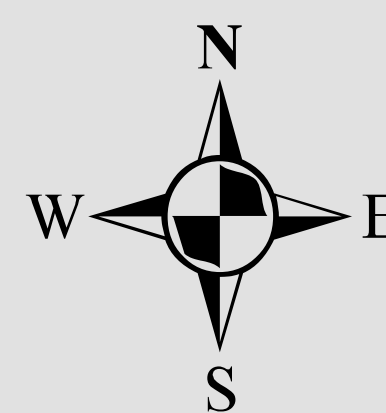


All of Section 06 Twp. 26 Rge. 27

Acres: 666 +/-

Legend

- Parcels
- Sections
- Easements
- Lots
- Quarter Section Lines
- RR Lines
- Subdivisions
- Meander Lines
- Water Lines
- Municipal Boundaries
- Gov't Lots
- Water Bodies



Note: This map is a worksheet used for illustrative purposes only. This is not a survey.

Date Printed: 10/26/2024



Prepared by the Office of
Marsha M. Faux, CFA, ASA
Property Appraiser
Polk County, Florida
255 North Wilson Avenue - Bartow, Florida - 33830-3951
(863) 534-4777