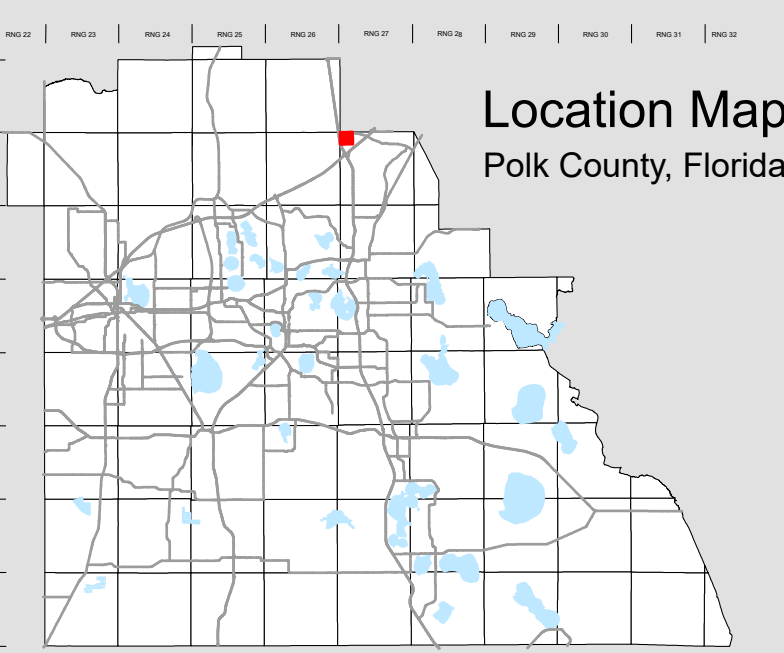
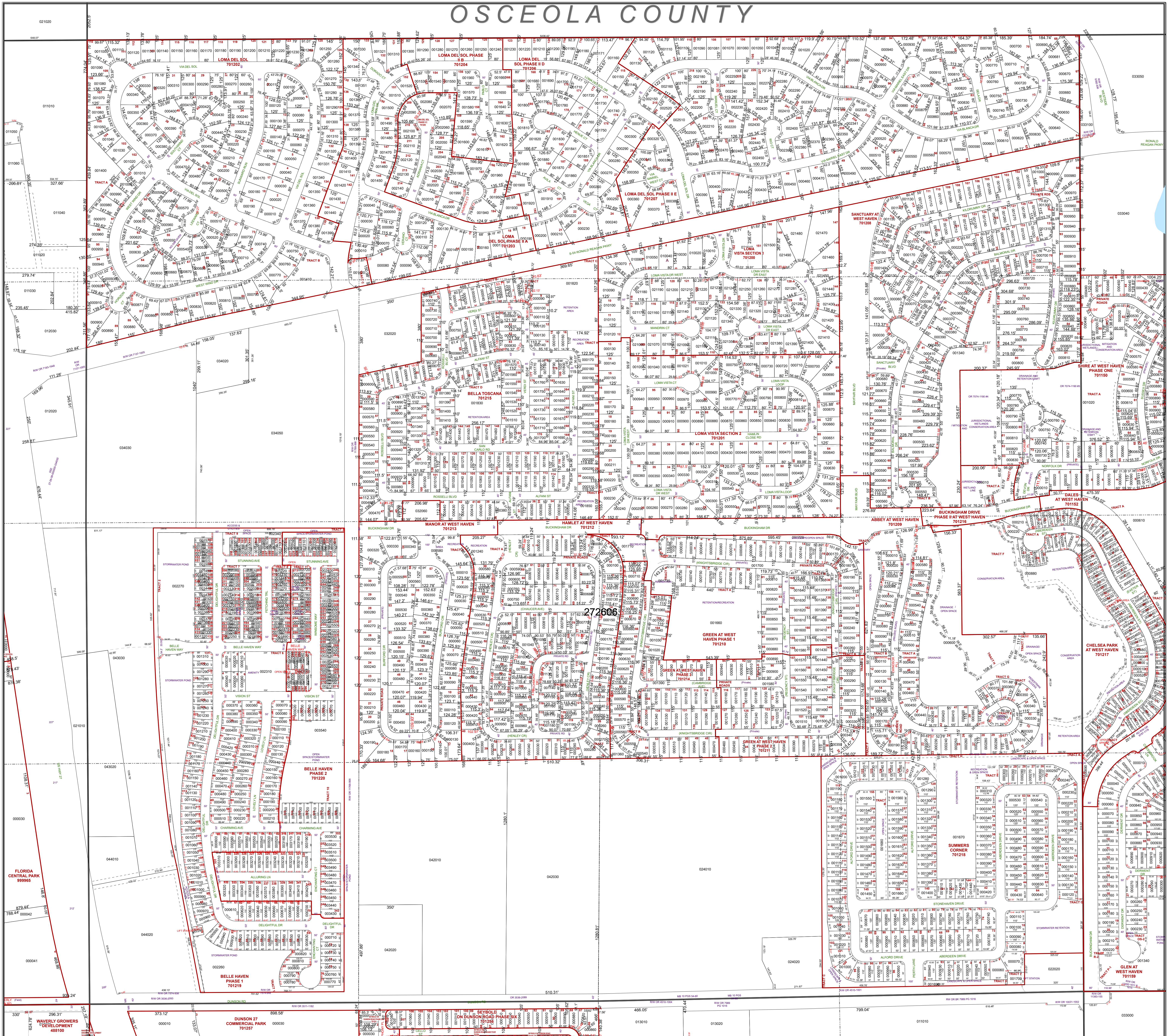
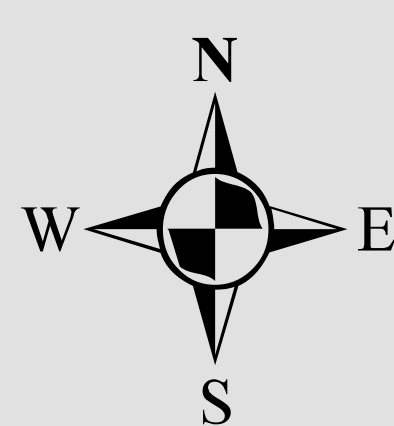


# OSCEOLA COUNTY



All of Section 06 Twp. 26 Rge. 27  
Acres: 666 +/-

- Legend**
- Parcels
  - Sections
  - Quartermen Lines
  - Meander Lines
  - Municipal Boundaries
  - Gov't Lots
  - Easements
  - RR Lines
  - Water Lines
  - Water Bodies



1 inch = 200 feet  
0 100 200 400 600 800  
Feet

Note: This map is a worksheet used for illustrative purposes only. This is not a survey.

Date Printed: 3/8/2025



Prepared by the office of the  
**Polk County Property Appraiser**  
Polk County, Florida  
255 North Wilson Avenue - Bartow, Florida - 33830-3951  
(863) 534-4777