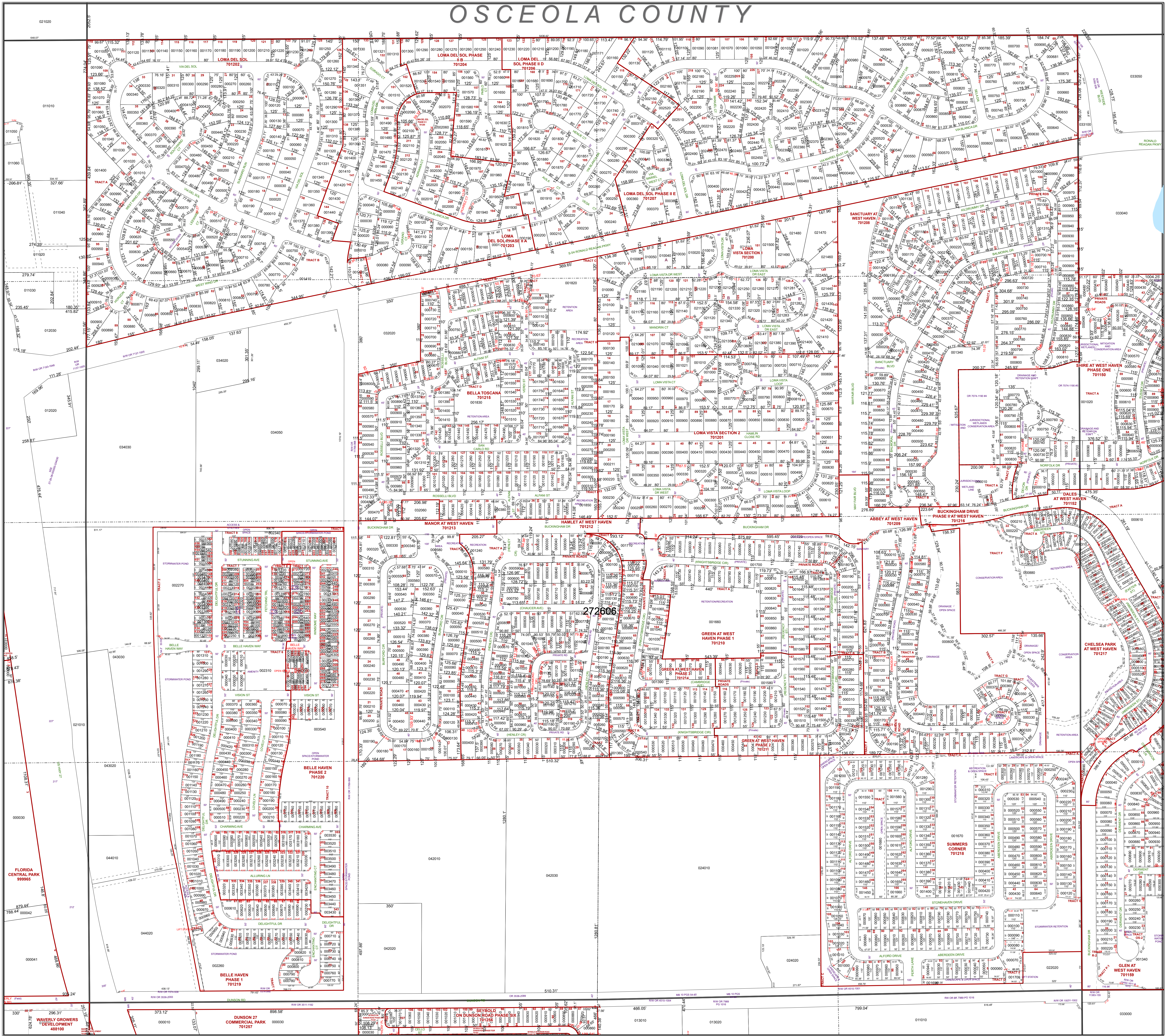


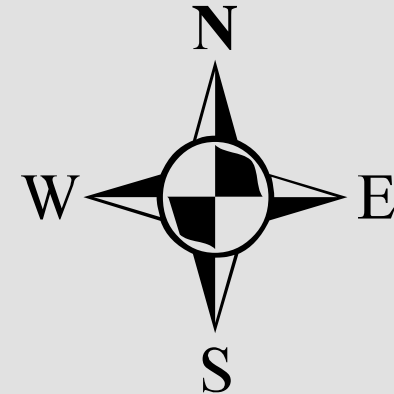
OSCEOLA COUNTY



All of Section 06 Twp. 26 Rge. 27

Acres: 666 +/-

1 inch = 200 feet



Legend

- Parcels
- Sections
- Easements
- RR Lines
- Water Lines
- Water Bodies
- Lots
- Quarter Section Lines
- Meander Lines
- Gov't Lots
- Subdivisions
- Municipal Boundaries

Note: This map is a worksheet used for illustrative purposes only. This is not a survey.

Date Printed: 3/29/2025



Prepared by the office of the
Polk County Property Appraiser
Polk County, Florida
255 North Wilson Avenue - Bartow, Florida - 33830-3951
(863) 534-4777

