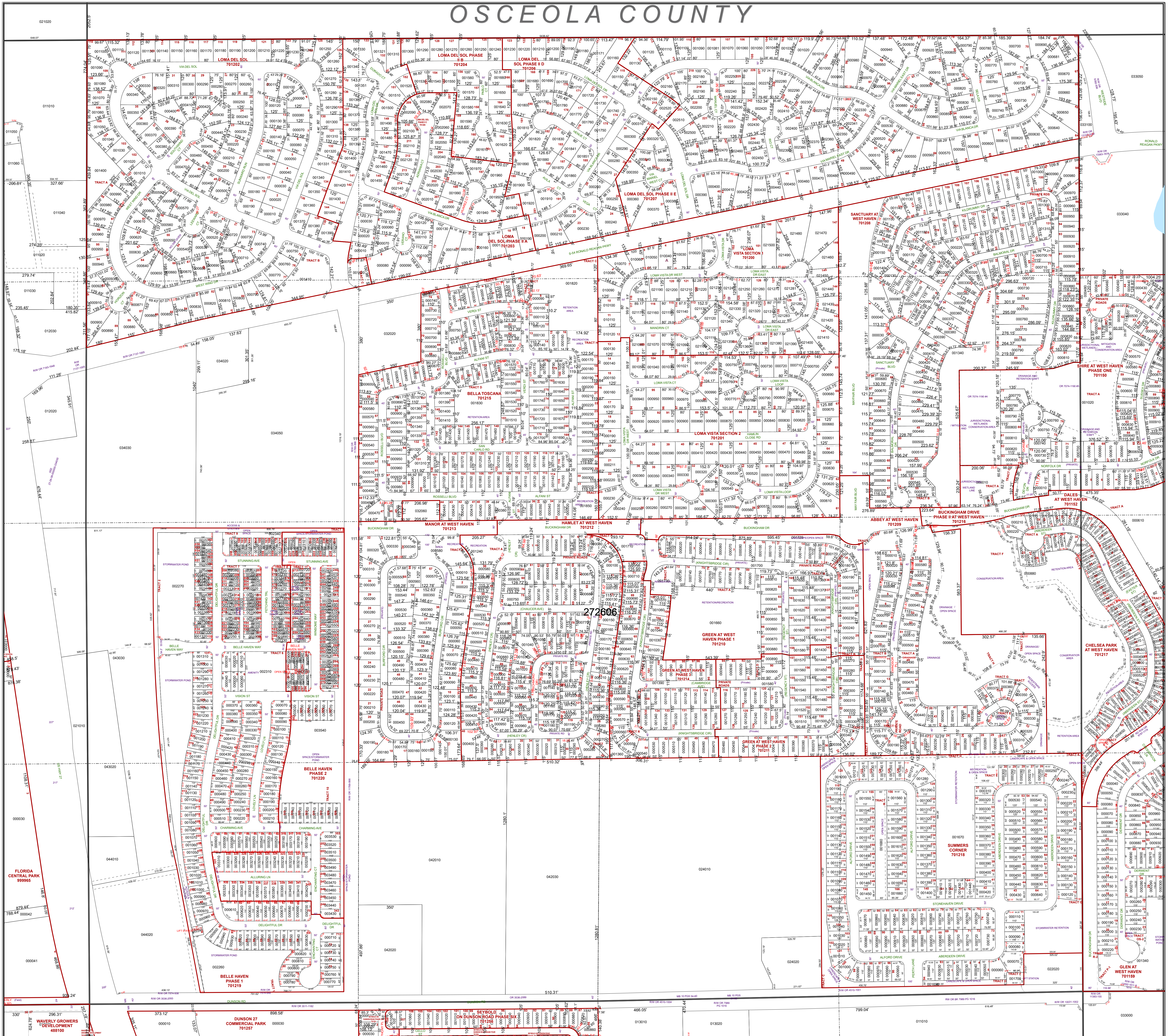


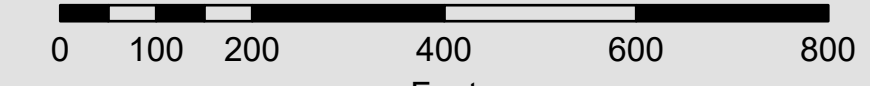
# OSCEOLA COUNTY



## All of Section 06 Twp. 26 Rge. 27

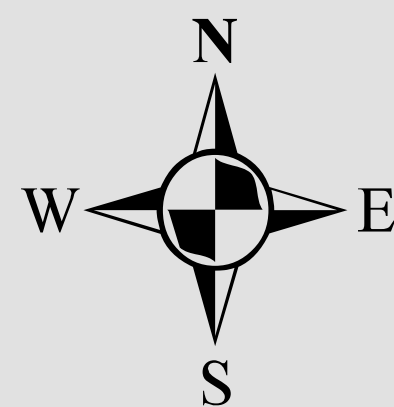
Acres: 666 +/-

1 inch = 200 feet



### Legend

- Parcels
- Sections
- Easements
- RR Lines
- Water Lines
- Water Bodies
- Lots
- Quarter Section Lines
- RR Lines
- Water Lines
- Water Bodies
- Subdivisions
- Meander Lines
- Gov't Lots
- Municipal Boundaries



Note: This map is a worksheet used for illustrative purposes only. This is not a survey.

Date Printed: 4/19/2025



Prepared by the office of the  
Polk County Property Appraiser  
Polk County, Florida  
255 North Wilson Avenue - Bartow, Florida - 33830-3951  
(863) 534-4777

