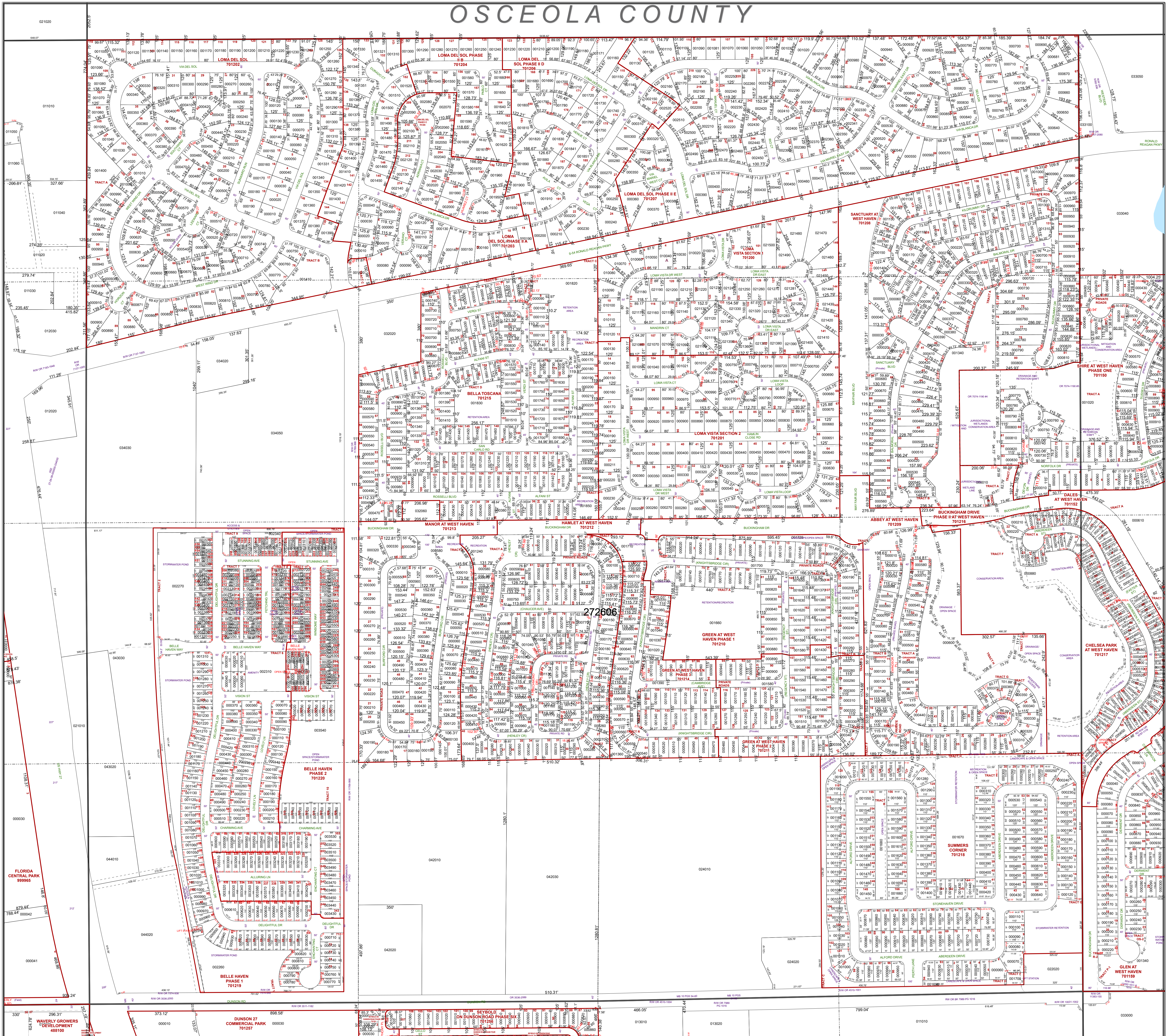


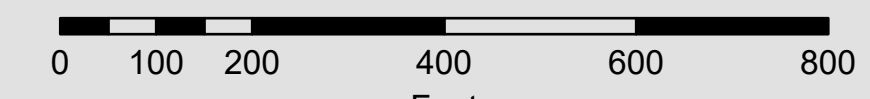
OSCEOLA COUNTY



All of Section 06 Twp. 26 Rge. 27

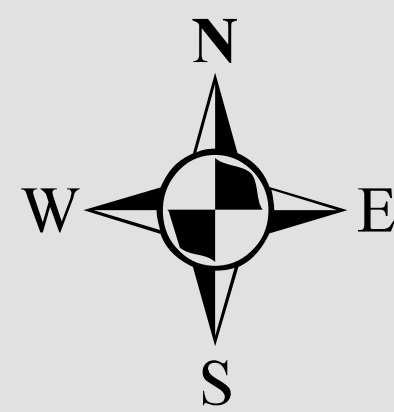
Acres: 666 +/-

1 inch = 200 feet



Legend

- Parcels
- Sections
- Easements
- Lots
- Quarter Section Lines
- RR Lines
- Subdivisions
- Meander Lines
- Water Lines
- Municipal Boundaries
- Gov't Lots
- Water Bodies



Note: This map is a worksheet used for illustrative purposes only. This is not a survey.

Date Printed: 11/16/2024



Prepared by the office of the

Polk County Property Appraiser

Polk County, Florida

255 North Wilson Avenue - Bartow, Florida - 33830-3951

(863) 534-4777

Location Map
Polk County, Florida

