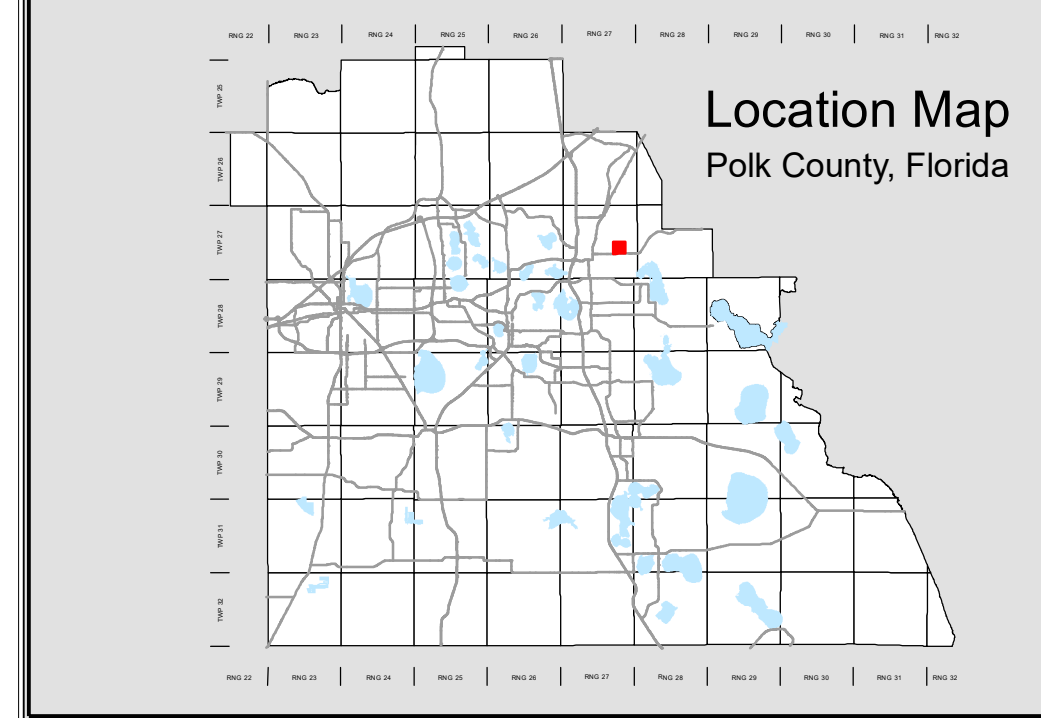
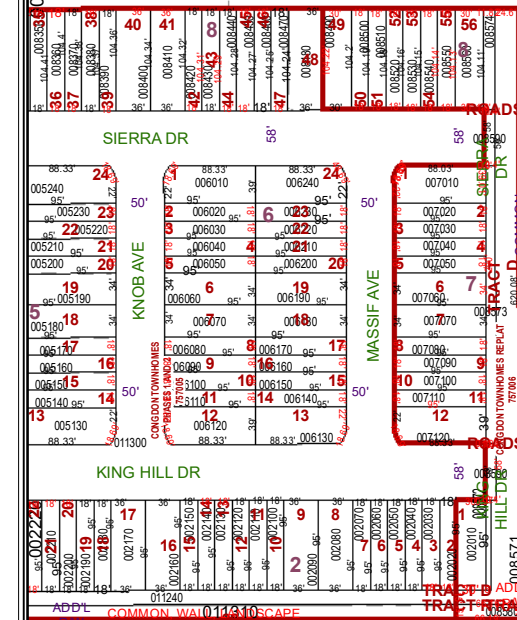


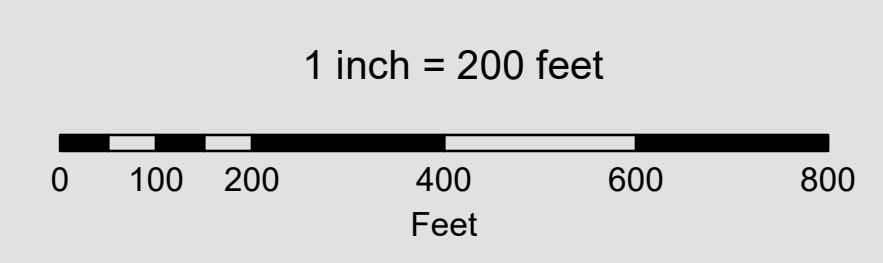
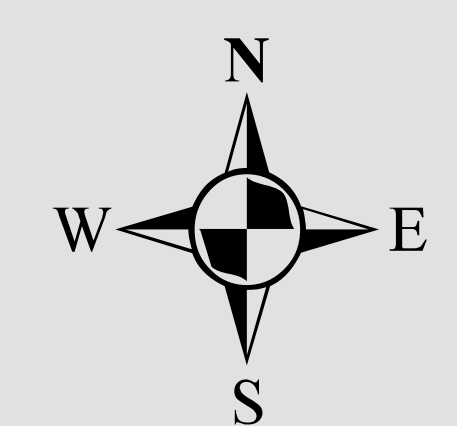
FLORIDA DEVELOPMENT  
CO SUBDIVISION  
040010 738500



## All of Section 23 Twp. 27 Rge. 27

Acres: 641 +/-

- Legend**
- Parcels
  - Sections
  - Easements
  - Lots
  - Quarter Section Lines
  - RR Lines
  - Subdivisions
  - Meander Lines
  - Water Lines
  - Municipal Boundaries
  - Gov't Lots
  - Water Bodies



Note: This map is a worksheet used for illustrative purposes only. This is not a survey.

Date Printed: 10/26/2024



Prepared by the Office of  
**Marsha M. Faux, CFA, ASA**  
Property Appraiser  
Polk County, Florida  
255 North Wilson Avenue - Bartow, Florida - 33830-3951  
(863) 534-4777