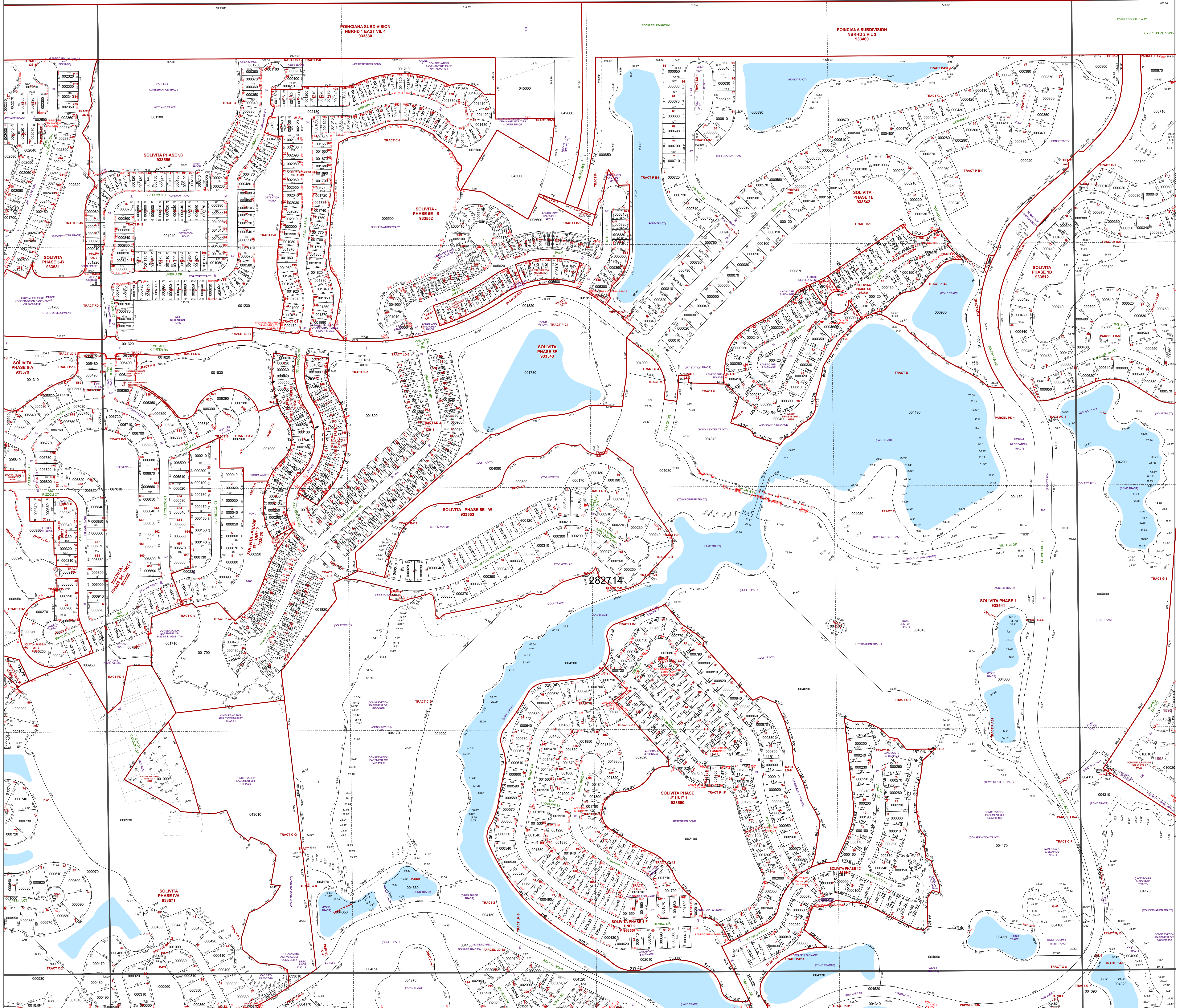


OSCEOLA COUNTY



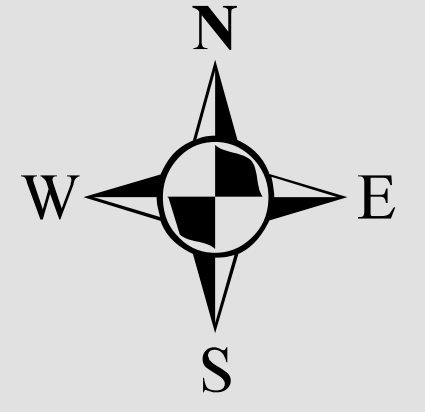
282714

All of Section 14 Twp. 27 Rge. 28

Acres: 646 +/-

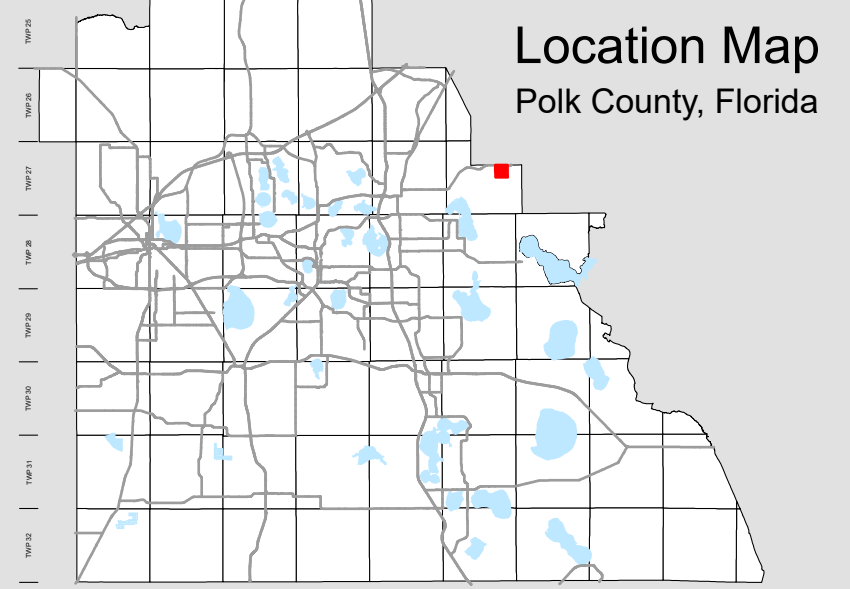
Legend

- Parcels
- Lots
- Subdivisions
- Municipal Boundaries
- Sections
- Quarter Section Lines
- Meander Lines
- Gov't Lots
- Easements
- RR Lines
- Water Lines
- Water Bodies



Note: This map is a worksheet used for illustrative purposes only. This is not a survey.

Date Printed: 11/23/2024



Location Map
Polk County, Florida



Prepared by the office of the
Polk County Property Appraiser
Polk County, Florida
255 North Wilson Avenue - Bartow, Florida - 33830-3951
(863) 534-4777