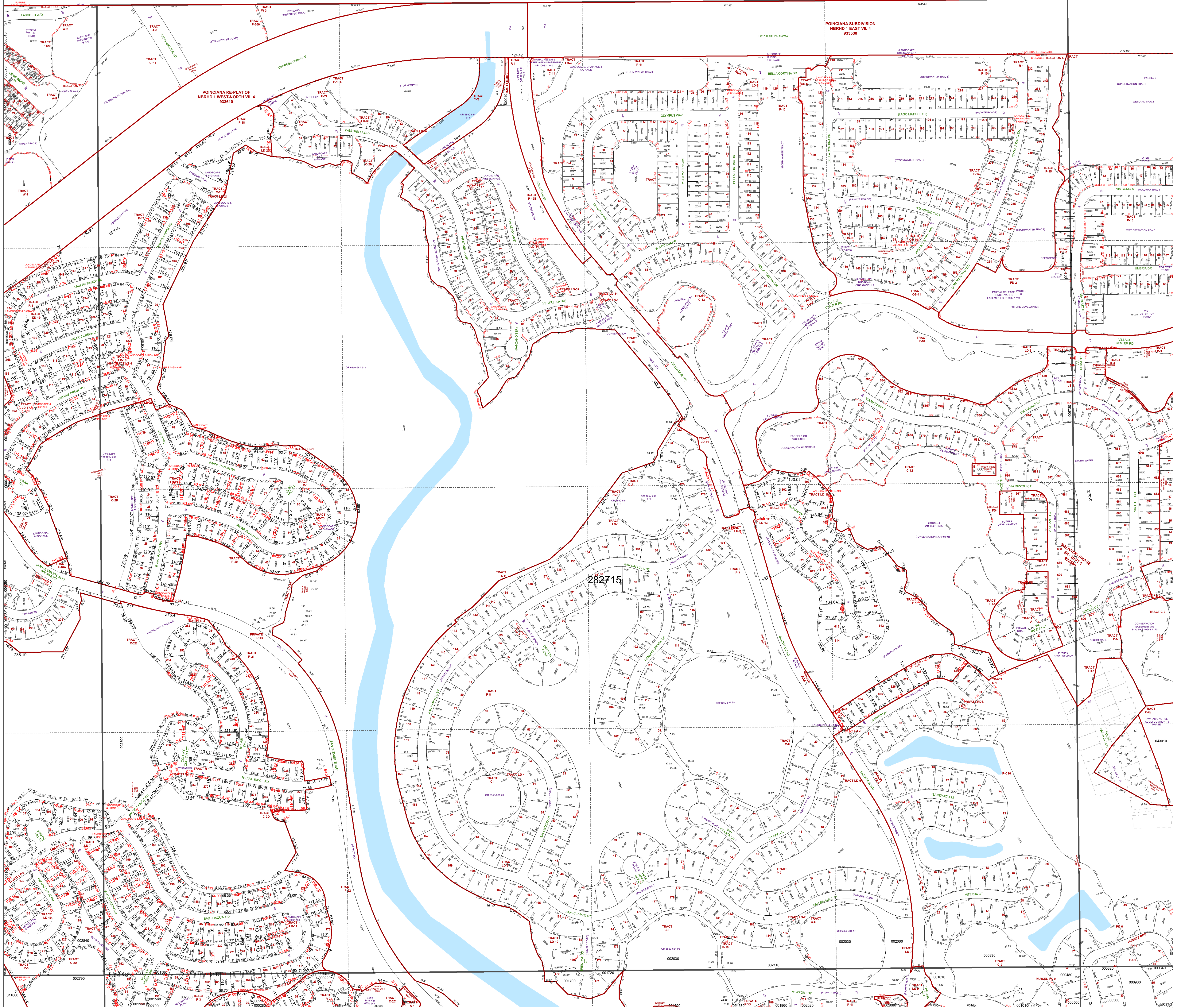


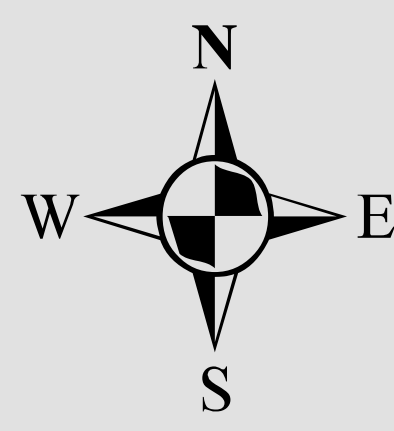
OSCEOLA COUNTY



All of Section 15 Twp. 27 Rge. 28
Acres: 648 +/-

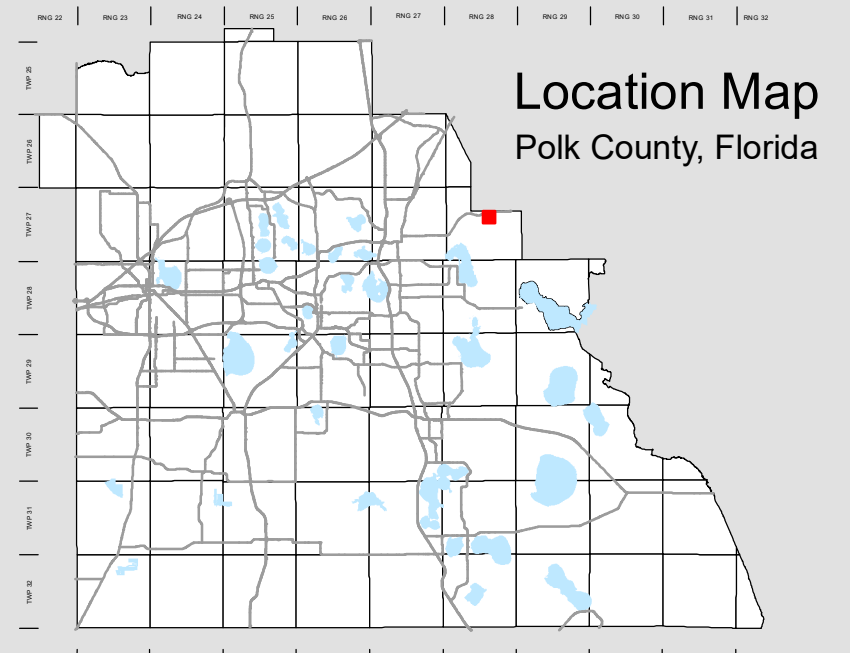
1 inch = 200 feet
0 100 200 400 600 800
Feet

- Legend**
- Parcels
 - Sections
 - Easements
 - Lots
 - Quarter Section Lines
 - RR Lines
 - Subdivisions
 - Meander Lines
 - Water Lines
 - Municipal Boundaries
 - Gov't Lots
 - Water Bodies



Note: This map is a worksheet used for illustrative purposes only. This is not a survey.

Date Printed: 11/2/2024



Location Map
Polk County, Florida



Prepared by the Office of
Marsha M. Faux, CFA, ASA
Property Appraiser
Polk County, Florida
255 North Wilson Avenue - Bartow, Florida - 33830-3951
(863) 534-4777