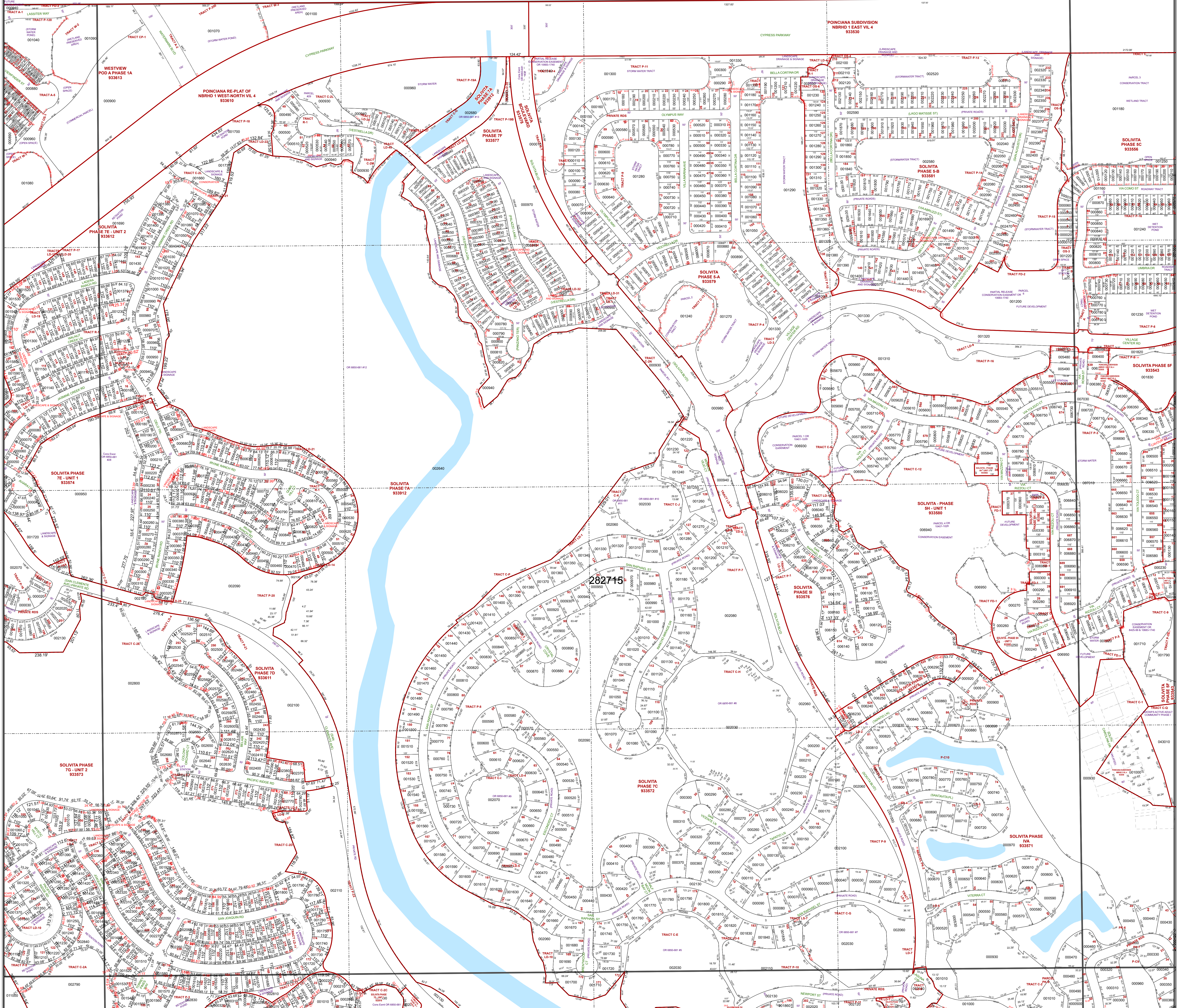
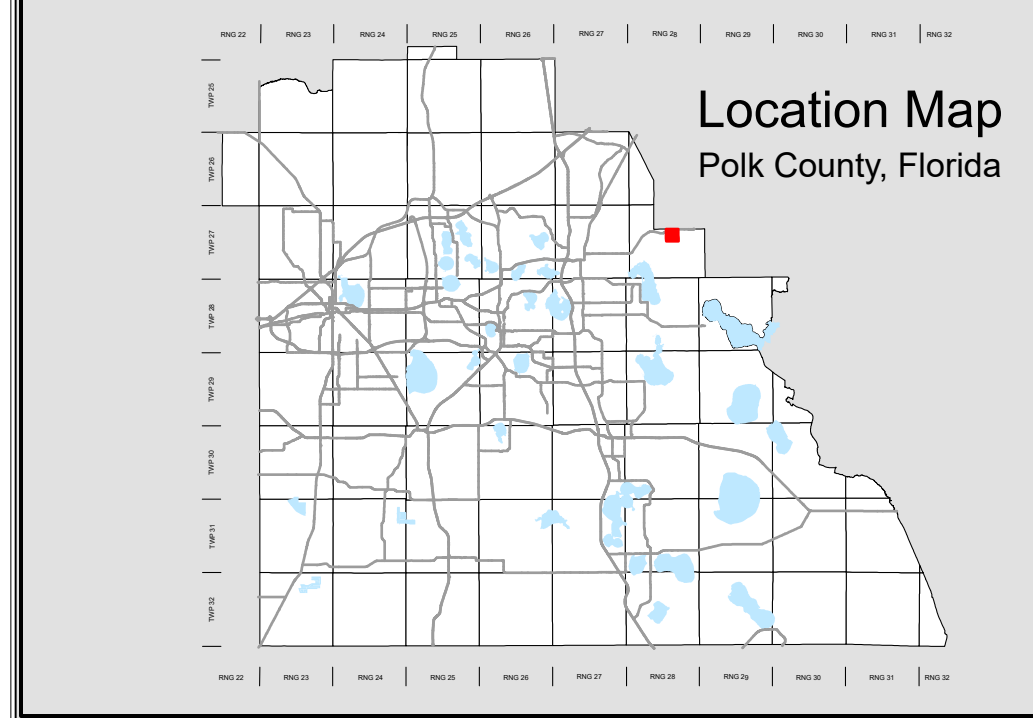


# OSCEOLA COUNTY



282715



All of Section 15 Twp. 27 Rge. 28  
Acres: 648 +/-

- Legend**
- Parcels
  - Lots
  - Subdivisions
  - Municipal Boundaries
  - Sections
  - Quarter Section Lines
  - Meander Lines
  - Gov't Lots
  - Easements
  - RR Lines
  - Water Lines
  - Water Bodies



Note: This map is a worksheet used for illustrative purposes only. This is not a survey.

Date Printed: 11/16/2024



Prepared by the office of the  
Polk County Property Appraiser  
Polk County, Florida  
255 North Wilson Avenue - Bartow, Florida - 33830-3951  
(863) 534-4777